



CONDOR GOLD

September 2016



DISCLAIMER

This written presentation (the "**Slides**") has been prepared by Condor Gold plc (the "**Company**") and is the sole responsibility of the Company. No representation or warranty, express or implied, is given by or on behalf of the Company or its shareholders, directors, officers, or employees or any other person as to the accuracy or completeness of the information or opinions contained in the Slides and no liability is accepted for any such information or opinions (including in the case of negligence, but excluding any liability for fraud).

The Slides do not constitute an offer, invitation or recommendation to subscribe for or purchase any securities in the Company. Neither the Slides, nor the fact of their distribution, shall form the basis of, and the Slides should not be relied on in connection with, any contract or future decision to acquire the Company's securities.

The Slides may contain forward-looking statements, including, without limitation, statements containing the words "believes", "expects", "estimates", "intends", "targets", "may", "plan", "will" and similar expressions, including the negative of those expressions. All statements contained in the Slides (including forward-looking statements) are made as at the date of this presentation and the Company accepts no obligation to disseminate any updates or revisions to them.

Forward-looking statements are based on current expectations and involve known and unknown risks, uncertainties and other factors beyond the control of the Company that could cause the actual performance or achievements of the Company to be materially different from any future results, performance or achievements expressed or implied by such forward-looking statements. Such risks, uncertainties and other factors include, among others, changes in the credit markets, changes in interest rates, legislative and regulatory changes, changes in taxation regimes, changes in gold prices, political risks, operational risks and general economic and business conditions. Accordingly, readers should not place undue reliance on forward-looking statements.

[The Slides contains maps, charts, schematics, cross-sections and other graphics and images (the "**Images**") which have been produced by the Company using common software packages such as MapInfo and Micromine. The source data for the Images includes the Company's own data, data from third party consultants and from publicly available information.]



Introduction to La India Project

- Historic production 576,000 oz gold @ 13.4g/t prior to closure in 1956. Circa 40,000 oz gold p.a. Noranda Mining
- 2.3M oz gold @ 4.0g/t to NI 43-101 CIM Code Mineral Resource– Sept 2014
- 675,000 oz gold @ 3.0g/t to NI 43-101 CIM Code Mineral Reserve- Nov 2014
- All-in sustaining cash cost under US\$700 per oz gold
- US\$110m low up front capital cost for base case
- **Whittle Enterprise Optimisation study increases gold production across 4 scenarios by 20% to 25% in 1st 5 years. Contained gold ranges 866k oz to 1.54M oz gold**
- Resource confined to only 10% of District, potential to double mineral resource
- **Significantly undervalued: US\$24 per resource oz gold in the ground and price_to_book ration 0.30 times**



Strategy Statement

Twin strategy

- Permit and construct a base case of 2,800tpd processing plant, producing 100,000 oz gold per annum mine at Mina La India
- Continue successful exploration strategy to determine if there is sufficient additional resources by 1m to 2m oz gold to expand production capacity



Why Invest in Condor Gold

- US\$23 per resource oz gold in the ground
- In ground valuation is 1.7% of the current gold price
- 0.30 times price to book ratio
- Mineral reserves: US\$700 all-in-sustaining cash costs
- Base case 100,000 oz gold p.a. open pit close to permitting
- District scale potential of up to 10M oz gold
- Medium term potential to bring significant additional oz gold into a mine plan
- Serious backers: World Bank/IFC, Jim Mellon and Ross Beaty
- Undervalued compared to peer group trading at 3% to 8% of the gold price
- Gold has entered a secular bull market.



Nicaragua Concessions 408 sq km land holdings



Why Nicaragua?

- Mining friendly jurisdiction, gold is the 2nd largest export
- 25 year concessions
- 100% ownership by overseas investors
- Very supportive Ministry of Energy and Mines
- Flagship La India Concession exempt VAT
- Capital costs of new processing plant tax deductible
- Low labour costs
- Repatriation of capital permitted
- Strong mining law
- Under explored
- Taxes reasonable, 3% royalty and 30% corporation tax



NI 43-101 CIM Standard Resource/Reserve- Sept 2014

Mineral Resource

La India Project

1.1M oz gold @ 3.5g/t in Indicated Category

1.2M oz gold @ 4.5g/t in Inferred Category

2.3M oz gold @ 4.0g/t

Including Open pit:

862,000 oz gold @ 3.2g/t Indicated

139,000 oz gold @ 2.6g/t Inferred

1,001,000 oz gold @ 3.1g/t

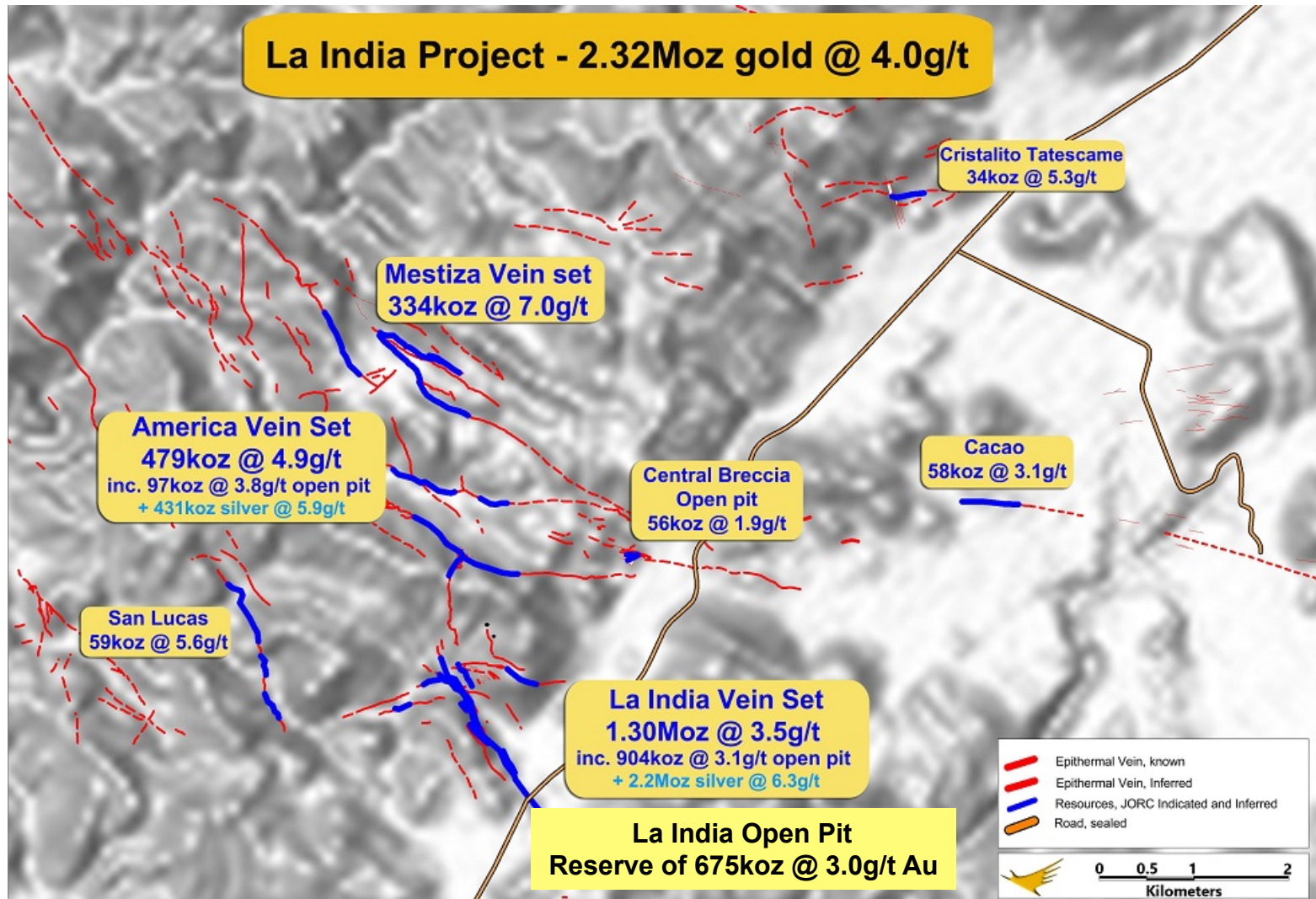
Mineral Reserve

La India open pit

675,000 oz gold @ 3.1g/t



La India Project – 2.33Moz gold



Whittle Enterprise Optimisation.....4 scenarios

	La India - PFS		La India	All Open Pits		All Open Pits + UG	
	Open Pit - PFS		Open Pit	PEA-A		PEA-B	
	IND Only		IND+INF	IND+INF		IND+INF	
	PFS	Whittle EO	Whittle EO	PEAA	Whittle EO	PEAA	Whittle EO
Nominal Processing Plant capacity tpd	2,200		2,800	3,300		4,400	
Nom. Capacity in M-tpa	0.8		1.0	1.2		1.6	
Contained gold koz	674	866	955	827	1,066	1,313	1,554
Recovered gold koz	614	796	882	752	985	1,203	1,437
1 st 5 years avg. production gold p.a. koz	76	91	101	94	118	138	165
Production improvement 1 st 5 years		20%	n/a		25%		20%

- +30% increase in gold within a pit shell as pits push deeper
- +20% to 25% increase in annual production
- Capex remains the same in each scenario
- NPV averages US\$195M and 31% IRRs
- AISC under US\$700 oz gold in all scenarios
- Artisanal miner ore of 10,000 oz per annum can be added to each scenario

Operating Costs

Category	Units	PFS	PEA Scenario A	PEA Scenario B
Mining - Open Pit	(US\$/t ore mined)	32.13	30.61	30.79
Mining- Underground	(US\$/t ore mined)	n/a	n/a	61.01
Processing	(US\$/t mill feed)	20.56	18.52	18.58
Refinery	(US\$/t mill feed)	0.35	0.27	0.3
G&A	(US\$/t mill feed)	5.46	3.8	3.88

- 31.1grams = 1 oz gold
- Gold price US\$1,250 per oz
- 1 tonne mineralised ore/rock = US\$40 (1,250/31.1)
- La india open pit reserve = 3g/t
- **1 tonne reserve contains US\$120 of gold per tonne**
- **Operating costs average US\$52 per tonne for open pit**



Pro-Nicaragua Agreement Permits and Land

- Pro-Nicaragua. Inward Investment Agency, Ministerial status, reports President
- Dec 2014 signed a 3 year agreement
- Jan 2015 Pro-Nicaragua wrote all Ministries stating support for Mina La India
- Feb and April 2015 hired two lawyers working for Condor at Pro-Nicaragua's office
- Senior lawyer focuses on permits with Ministries, attorney general office
- Property lawyer based at Mina La India, clean up land titles
- Both lawyers attend meetings with Condor staff:
 - Ministry of Environment
 - Ministry of Energy and Mines
 - Ministry Housing
 - Local mayors
 - Rural land owners
 - Community leaders
- SIGNIFICANTLY DE-RISKS THE PROJECT



La India Open Pit: optimised mining schedule

Being Permitted

Processing plant capacity	2,800 tonnes per day
Processing plant capacity	1M tonnes per annum
Contained gold in pit shells	955,000 oz (866,000 Indicated + 89,000 Inferred)
Recovered gold	822,000 oz
Annual production 1 st 5 years	101,000 oz

- US\$200,000 independent study by Whittle Consulting Ltd of Australia
- +30% increase in gold within a pit shell as pits push deeper
- +20% to 25% increase in annual production
- Capex remains the same in each scenario
- NPV averages US\$195M and 31% IRRs across 4 production scenarios
- Artisanal miner ore of 10,000 oz per annum can be added



Condor is fully compliant with IFC performance standards

World Bank's IFC is an 8.5% shareholder in Condor Gold
IFC appointed Social and Environmental consultants

- US\$500,000 spent in compliance in 2015
- Stakeholder Engagement Plan
- Communications Plan
- Land Acquisition and Resettlement Framework
- Grievance Mechanism

- Ground Water Participatory Monitoring Program
- Environmental and Social Management Manual
- Security Policy and Code of Conduct
- Human Resource Policy



Social Licence to Operate

- Objective to prepare community for Public Consultation 2,800tpd plant
- Corporate Social Responsibility Strategy and Stakeholder Engagement Plan
- Information office opened Nov 2015
- Local newsletter
- Education: In alliance with Ministry Education supporting 919 students with school supplies in 15 villages
- Technical Training: In alliance Ministry of Labour training planned for 310 people. 9 separate courses. 100 people taken course so far. Supporting a computer lab., English courses, Construction Foreman, Automotive Mechanic and welding.
- Health: over 1,500 medical consultations, 600 lab tests, supporting rural health program, fumigations against Dengue
- Catholic Church: several meetings and CSR strategy explained and helped repair or improve infrastructure of 15 churches of different denominations
- Water Project
- Sports: supporting football, baseball, basketball and volleyball
- Police meetings explain CSR Strategy and permitting
- Mayor Meetings explain CSR Strategy and permitting

Environmental Permit.....key permit

- April 2015 Terms of Reference submitted MARENA. Replied 30 days
- Nov 2015, EIA of 700 pages submitted
- 16 SOPs for environmental and social
- Dec 2015 EIA passed initial technical review
- Inter-institutional committee formed of MARENA, MEM, local Mayors
- Inter-institutional committee –meetings held March to May
- **MARENA confirmed passed technical review in June 2016**
- Preparing stakeholders for Public Consultation



Benefits to Nicaragua and the local Community

To Nicaragua

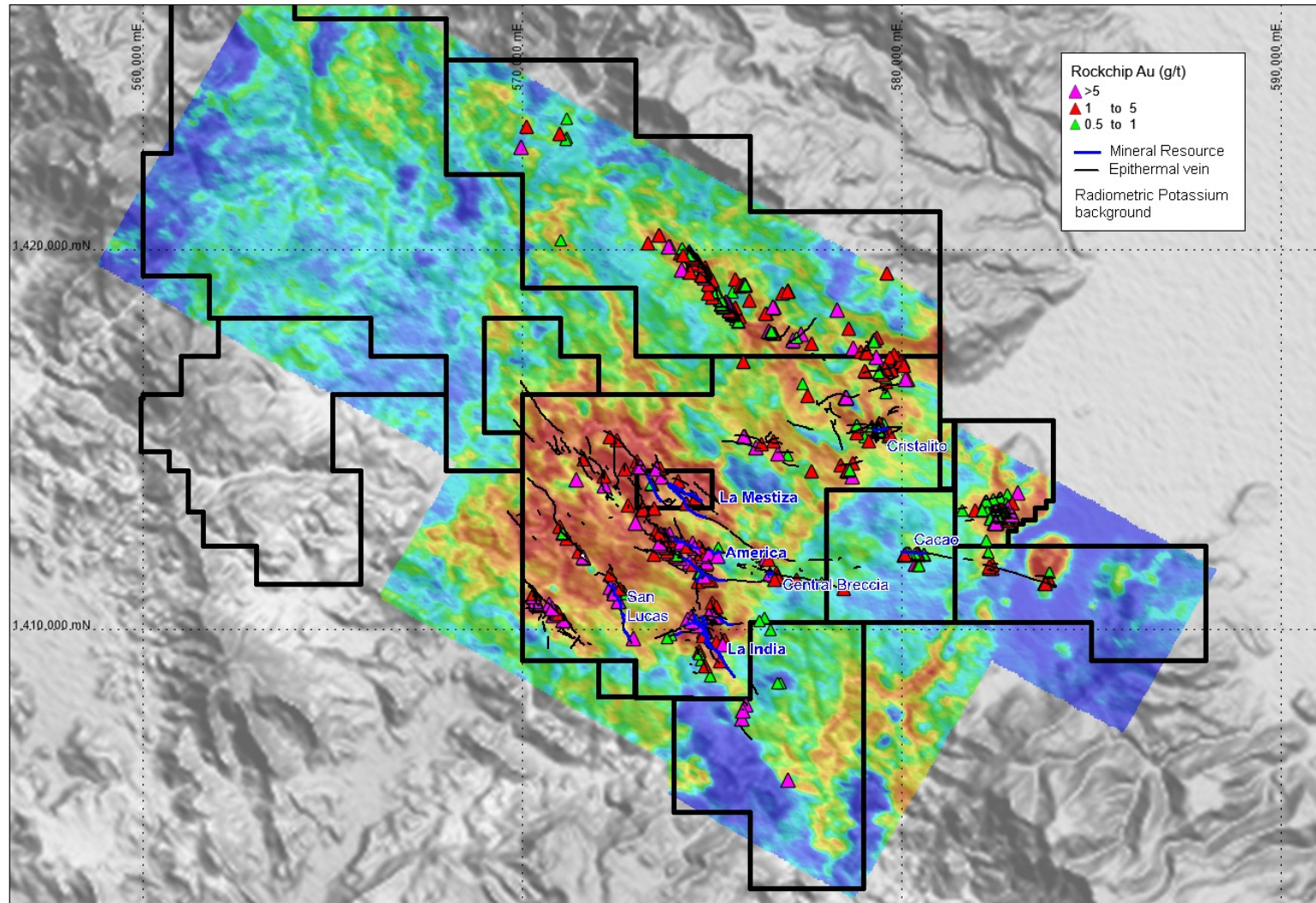
- US\$120m foreign direct investment from a British Company
- Show case state of the art mine in Central America with best possible environmental practices
- 3% royalty on sales
- 30% corporation tax

To the Community

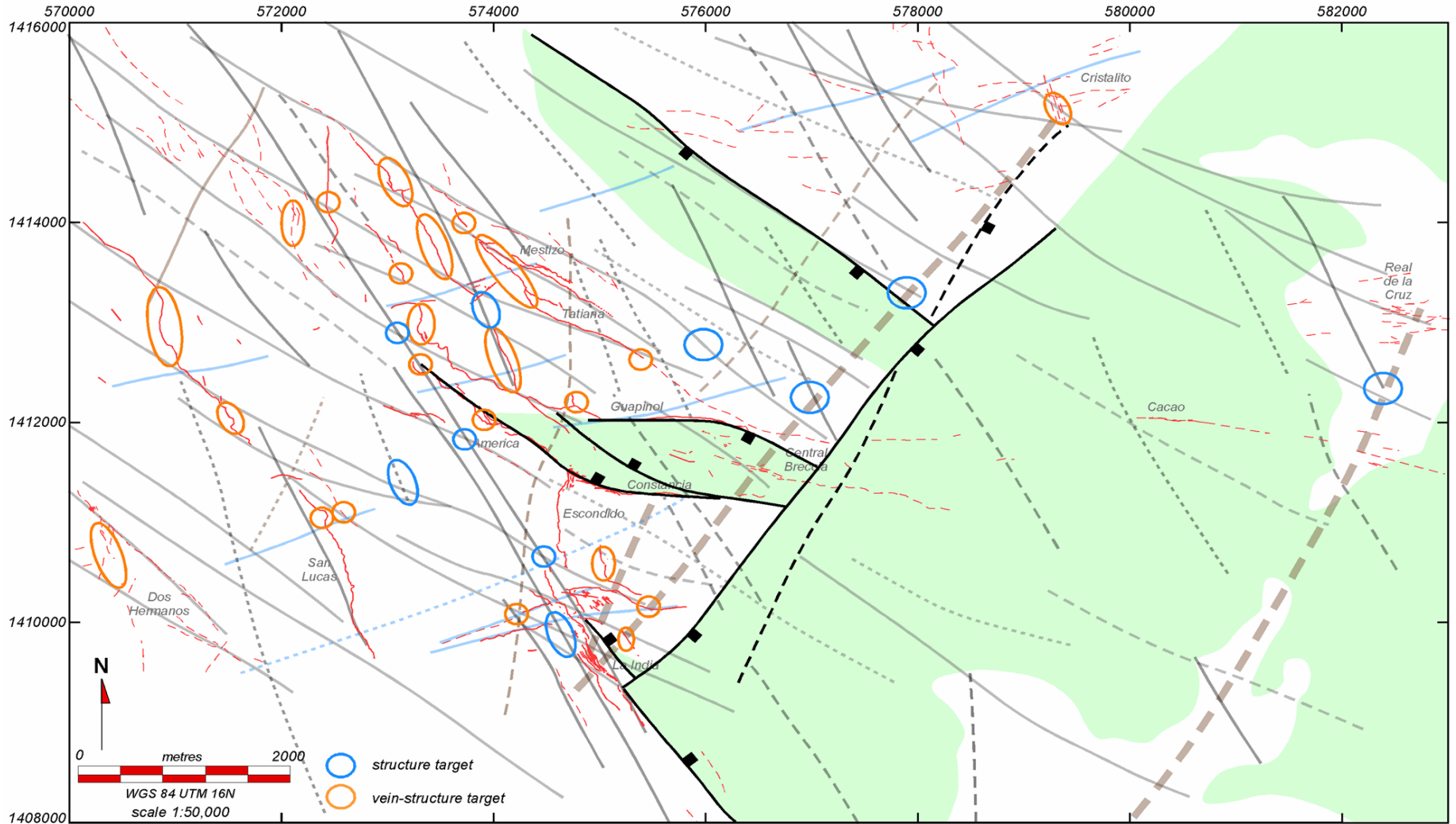
- 500 jobs during the construction period
- 300 jobs during the operations
- Training courses to improve skills and salaries
- For every 1 job in a mine 5 jobs supplying the mine
- Better standards of living
- New healthcare center and school
- Water 24/7 not 1 hour in 48 hours



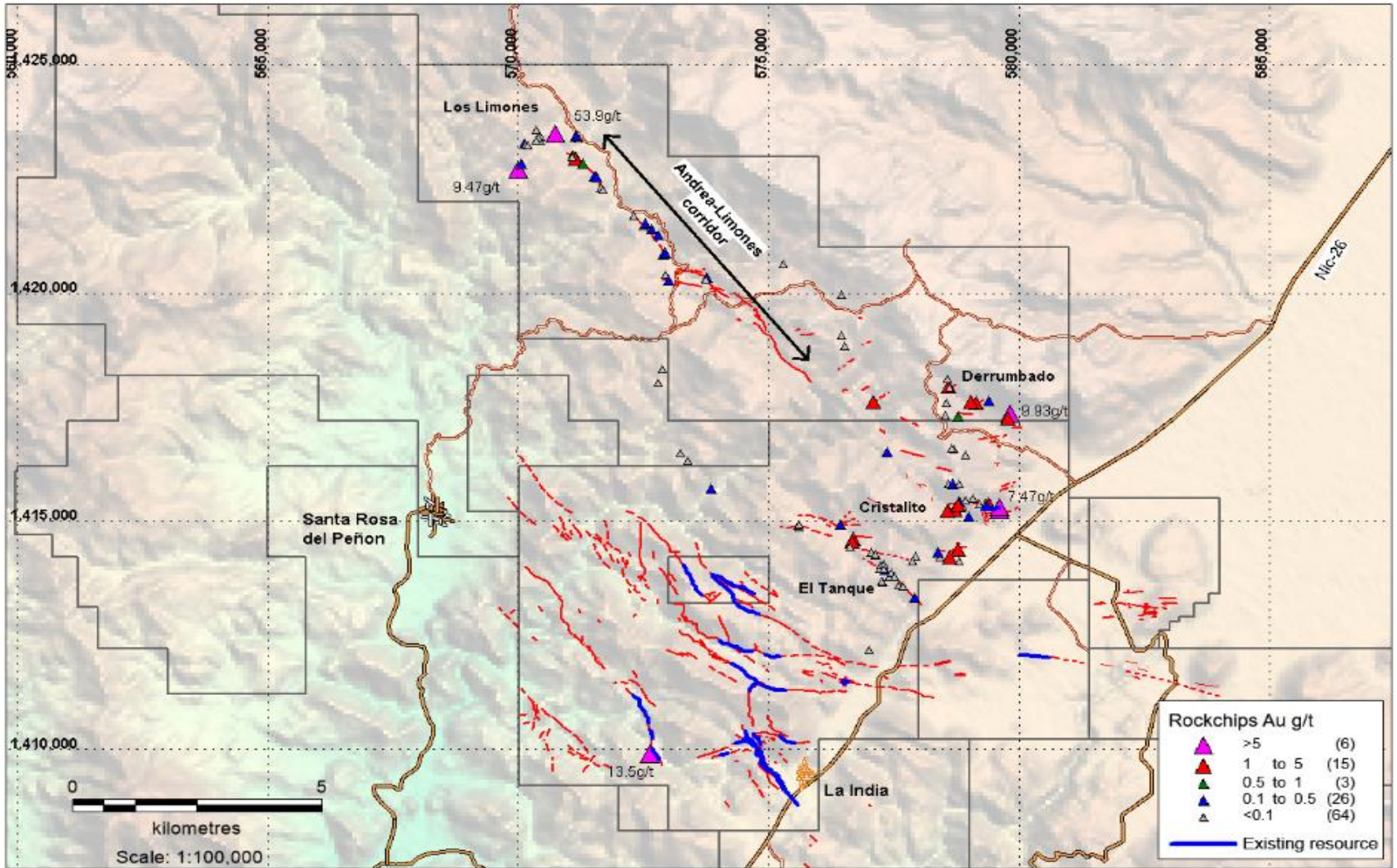
Geophysics: Demonstrates a District Play



Structural Report Highlights 33 Additional Targets



53.9g/t gold rock chip: 12 km long mineralised corridor



Drilling Programs for Resource expansion

Vein Set	Current Resoruce	Target	Increase
La India	1300k oz	1600k oz	
America	479k oz	630k oz	
Mestiza	333k oz	780k oz	
TOTAL	2112k oz	3010k oz	43%
Cacao	58k oz	?	
Central Breccia	56k oz	?	
San Lucas	59k oz	?	
Tatascame	34k oz	?	
Blue sky		?	

20,000m drill program to increase resource on 3 main vein sets by 40%



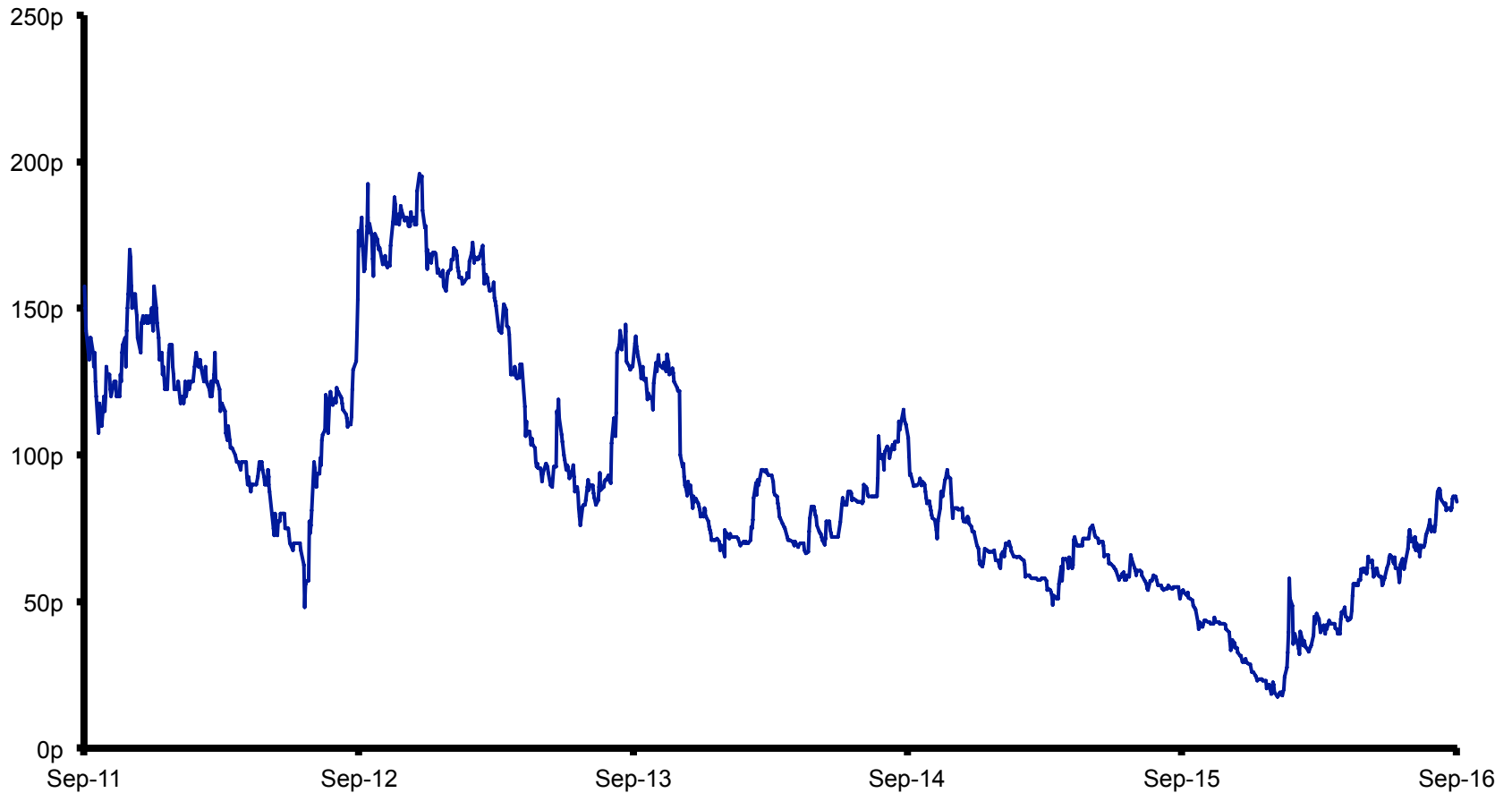
Share Capital Structure

- Ordinary shares in issue: 52.85M
- Options: 3.1M
- Warrants ex price £1.44 3.6M
- Warrants ex price £0.60 4.3M
- Share Price: £0.84
- Market Capitalisation: £44M or US59M
- The Company's significant shareholders are set out in the table below:

Shareholder	No. of shares	Percentage of issued share capital
Regent Pacific Group/Jim Mellon	5,198,318	9.84%
IFC	3,900,000	8.51%
Mark Child	3,967,645	7.51%
Oracle Investment Management	3,954,645	7.48%
Ross Beaty	3,750,000	7.10%



Chart of Share Price: 5 years



What's Next at la India Project?

- Applied for key environmental permit 2,800tpd processing plant
- MARENA has confirmed the EIA has passed a technical review of the Environmental and Social Studies
- Public Consultation
- Secure freehold rural land
- Continue complying with IFC performance standards for Social and Environmental matters

Once permits granted,

- 12 months of additional technical studies
- 24 month construction period

Demonstrate District Play by:

- follow up on 33 new targets identified in structural geology report
- expand on 71 sq km soil survey to another 242 sq km
- Regional mapping

