



# CONDOR GOLD

Precious Metals Summit  
Zurich

3<sup>rd</sup> & 4<sup>th</sup> November 2015



# DISCLAIMER

- This written presentation (the "**Slides**") has been prepared by Condor Gold plc (the "**Company**"). The Slides are the sole responsibility of the Company and are subject to updating, correction, completion, revision, further verification and amendment. Any reference to the Slides shall include any part or parts thereof.
- The Slides, and the accompanying oral presentation, do not constitute (i) an offer or an intended offer of securities in the Company, (ii) a recommendation regarding any decision to sell or purchase securities in the Company or (iii) a prospectus, disclosure document or listing particulars relating to the Company nor do they form part of any offer or invitation to purchase, sell or subscribe for, or any solicitation of any such offer to purchase, sell or subscribe for, any securities in the Company. The Slides, or the fact of their distribution, shall not form the basis of and should not be relied on in connection with, any contract or future decision to acquire the Company's securities.
- The Slides and the accompanying oral presentation are confidential and the Slides are being supplied to you solely for your information and may not be reproduced or distributed, passed on or disclosed, whether directly or indirectly, to any other person or published, in whole or in part, for any purpose. No reliance may be placed for any purpose whatsoever on the information contained in the Slides and the accompanying verbal presentation or the completeness, fairness or accuracy of such information. No representation or warranty, express or implied, is given by or on behalf of the Company or its shareholders, directors, officers, or employees or any other person as to the accuracy or completeness of the information or opinions contained in the Slides and the accompanying verbal presentation, and no liability is accepted for any such information or opinions (including in the case of negligence, but excluding any liability for fraud).
- The Slides contains maps, charts, schematics, cross-sections and other graphics and images (the "**Images**") which have been produced by the Company using common software packages such as MapInfo and Micromine. The source data for the Images includes the Company's own data, data from third party consultants and from publicly available information.
- The Slides may contain forward-looking statements, which relate, inter alia, to the Company's proposed strategy, plans and objectives. Such forward-looking statements are based on current expectations and involve known and unknown risks, uncertainties and other factors beyond the control of the Company that could cause the actual performance or achievements of the Company to be materially different from any future results, performance or achievements expressed or implied by such forward-looking statements. Such risks, uncertainties and other factors include, among others, changes in the credit markets, changes in interest rates, legislative and regulatory changes, changes in taxation regimes, changes in gold and silver prices, political risks, operational risks and general economic and business conditions. These forward-looking statements speak only as at the date of the Slides, they should not be relied on and the Company accepts no obligation to disseminate any updates or revisions to them. No representation or warranty is given by the Company as to the performance, achievement or reasonableness of any such forward-looking statements.
- In the United Kingdom the Slides are for distribution only to persons who fall within the exemptions contained in Articles 19(5) and 49(2) of the Financial Services and Markets Act 2000 (Financial Promotion) Order 2005 (as amended) ("**FPO**") (such as persons who are authorised or exempt persons within the meaning of the FPO and certain other persons having professional experience in matters relating to investments, high net worth companies, unincorporated associations or partnerships and the trustees of high value trusts) and persons to whom distribution may otherwise lawfully be made. Any investment, investment activity or controlled activity to which the Slides relate is available only to such persons and will be engaged in only with such persons. Persons of any other description, including those that do not have professional experience in matters relating to investments, should not rely or act upon the Slides.
- The Slides should not be distributed, published, reproduced or otherwise made available in whole or in part by the recipients or any other person to any other person or for any purpose. In particular, neither the Slides nor any copy of them may be distributed or transmitted in or into the United States of America, Australia, the Republic of South Africa, the Republic of Ireland, Japan or Canada or in any other country outside the United Kingdom where such distribution may lead to a breach of law or regulatory requirements or transmitted, distributed or sent to or by any national, resident or citizen of such countries or to any US Person as that term is defined in Regulation S under the United States Securities Act of 1933 (as amended) (the "**Securities Act**"). The distribution of the Slides in certain jurisdictions may be restricted by law and therefore persons into whose possession these Slides come should inform themselves about and observe any such restrictions. Any such distribution could result in a violation of the law of such jurisdiction.
- The ordinary shares referred to in the Slides (the "**Shares**") have not been, and will not be, registered under the Securities Act or with any securities regulatory authority of any state or other jurisdiction of the United States. The Company has not been registered and will not register under the United States Investment Company Act of 1940 (as amended). Subject to certain exceptions, the Company's securities may not, directly or indirectly, be offered or sold within the United States of America, Australia, South Africa, the Republic of Ireland, Japan or Canada or offered or sold to a resident of such countries.
- **The Shares have not been recommended by the US federal or state securities commission or regulatory authority nor have such authorities confirmed the accuracy or adequacy of this document. Any representation to the contrary is a criminal offence in the United States.**

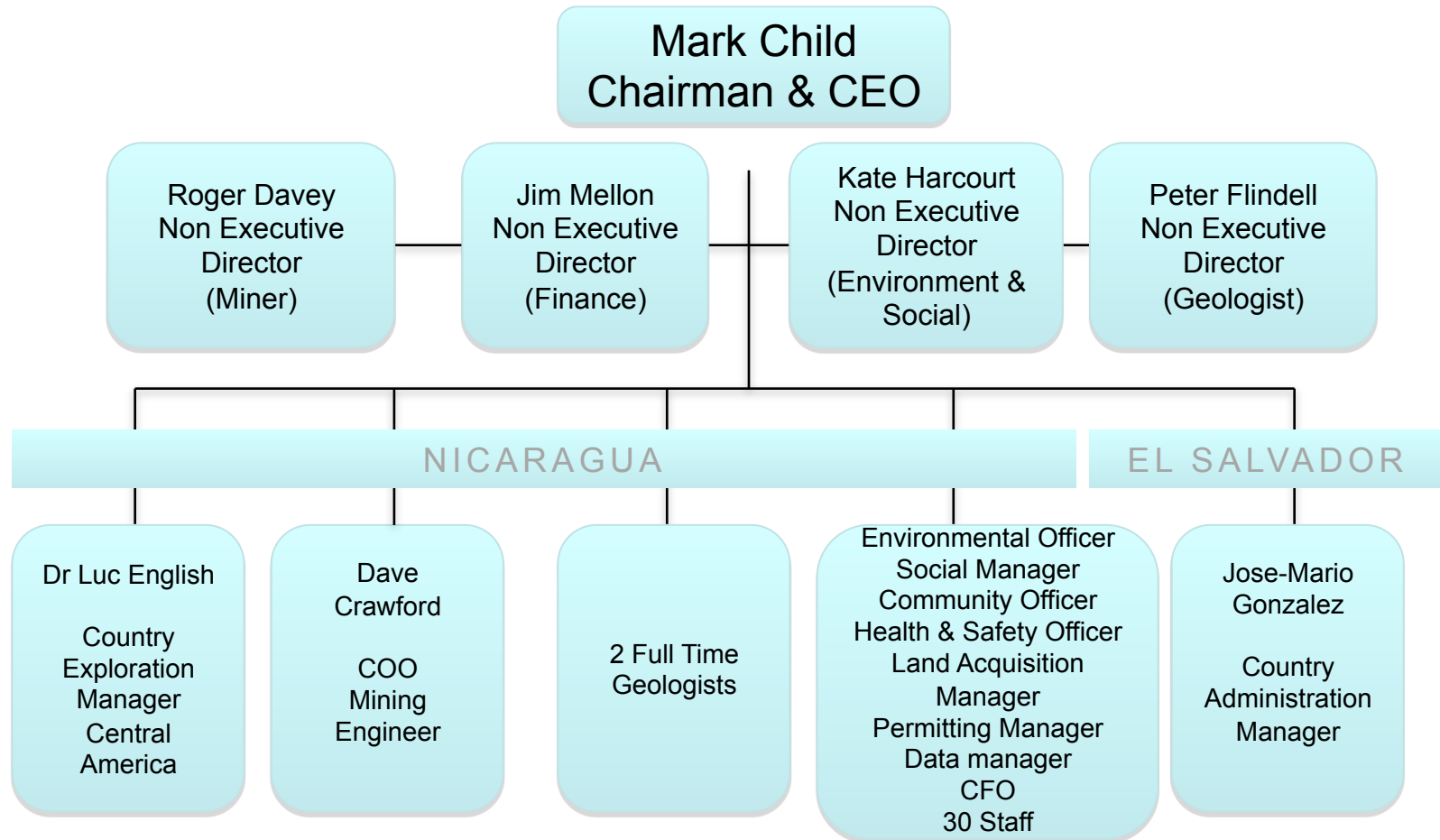


# Introduction to La India Project

- Historic production 576,000 oz gold @ 13.4g/t prior to closure in 1956. Circa 40,000 oz gold p.a. Noranda Mining
- 2.3M oz gold @ 4.0g/t to NI 43-101 CIM Code Mineral Resource– Sept 2014
- Including 1.1M oz high grade open pit @ 3.1g/t
- 675,000 oz gold @ 3.0g/t to NI 43-101 CIM Code Mineral Reserve- Nov 2014
- All-in sustaining cash cost under US\$700 per oz gold
- US\$110m low up front capital cost for base case
- Optimisation study increase gold production 20% to 25% in 1<sup>st</sup> 5 years
- Resource confined to only 10% of District
- Excellent Infrastructure: Main tarmac road at southern end of project. Electricity pylons by road, with hydro electric dam 10km from concession
- Situated in a country with 25 years of stability with an established mining code and a pro-mining government



# Corporate Management Structure



# Strategy Statement

## Strategy:

- Progress La India Open Pit from PFS to FS for 80,000 oz gold p.a. increase to 100,000 oz gold p.a. by adding feeder pits and 137,000 oz gold p.a. by adding underground potential
- Continue successful exploration strategy to determine significant upside of La India Project
- De-risk the project by 1) land acquisition and 2) permitting
- **Announced a “Strategic Review” on 4<sup>th</sup> September 2015. Condor Gold plc is currently in an “Offer Period” as defined by the UK Takeover Code.**



# Nicaragua Concessions 380 sq km land holdings

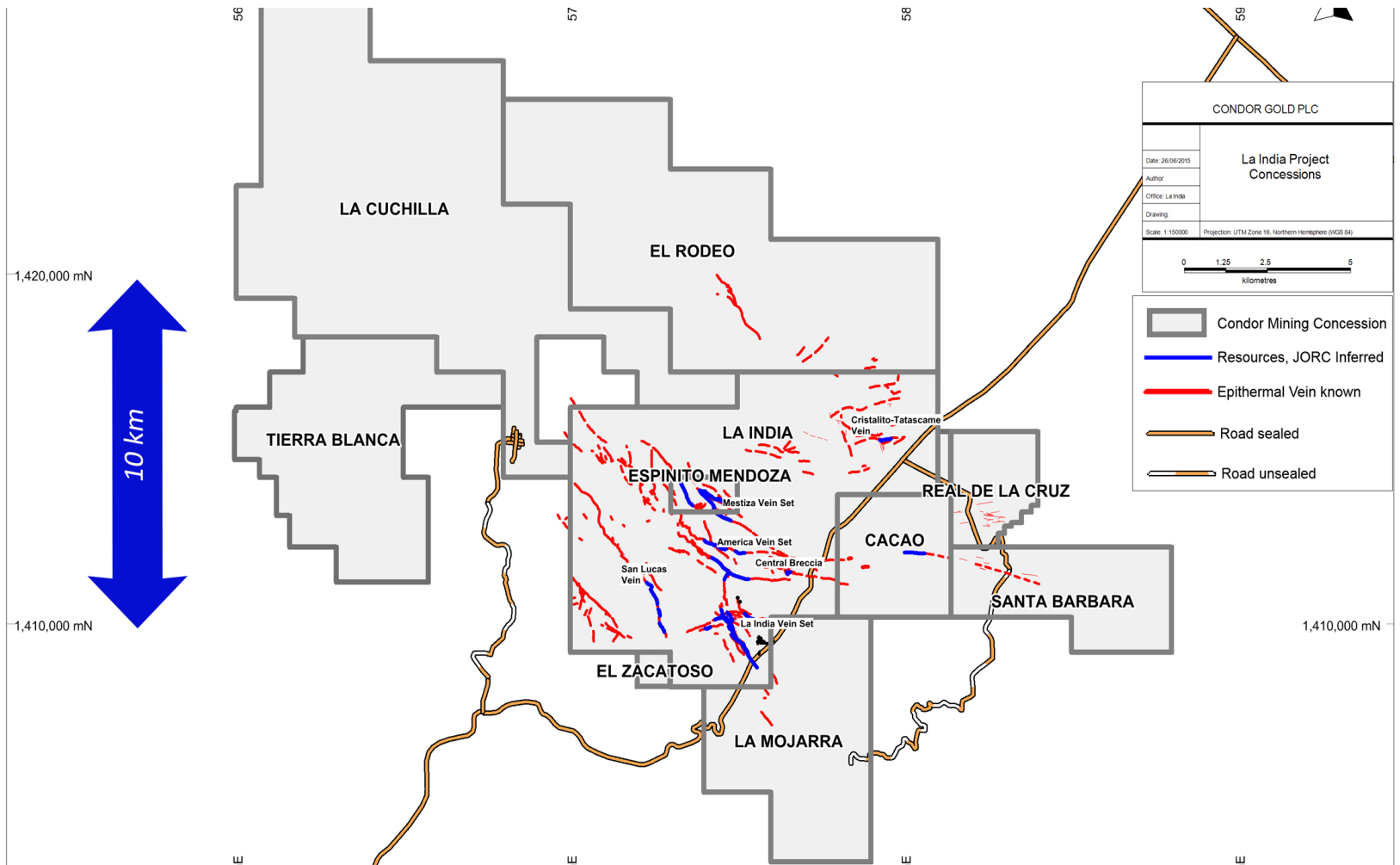


# Why Nicaragua?

- Mining friendly jurisdiction, gold is the 2<sup>nd</sup> largest export
- 25 year concessions
- 100% ownership by overseas investors
- Very supportive Ministry of Energy and Mines
- Flagship La India Concession exempt VAT
- Capital costs of new processing plant tax deductible
- Low labour costs
- Repatriation of capital permitted
- Strong mining law
- Under explored
- Taxes reasonable, 3% royalty and 30% corporation tax



# La India Mining District- Condor has 313 sq km





# NI 43-101 CIM Standard Resource- Sept 2014

La India Project

1.1M oz gold @ 3.5g/t in Indicated Category  
1.2M oz gold @ 4.5g/t in Inferred Category

---

2.3M oz gold @ 4.0g/t

Including Open pit:

862,000 oz gold @ 3.2g/t Indicated  
139,000 oz gold @ 2.6g/t Inferred

---

1,001,000 oz gold @ 3.1g/t

Rio Luna Project

87,000 oz gold @ 3.9g/t Inferred



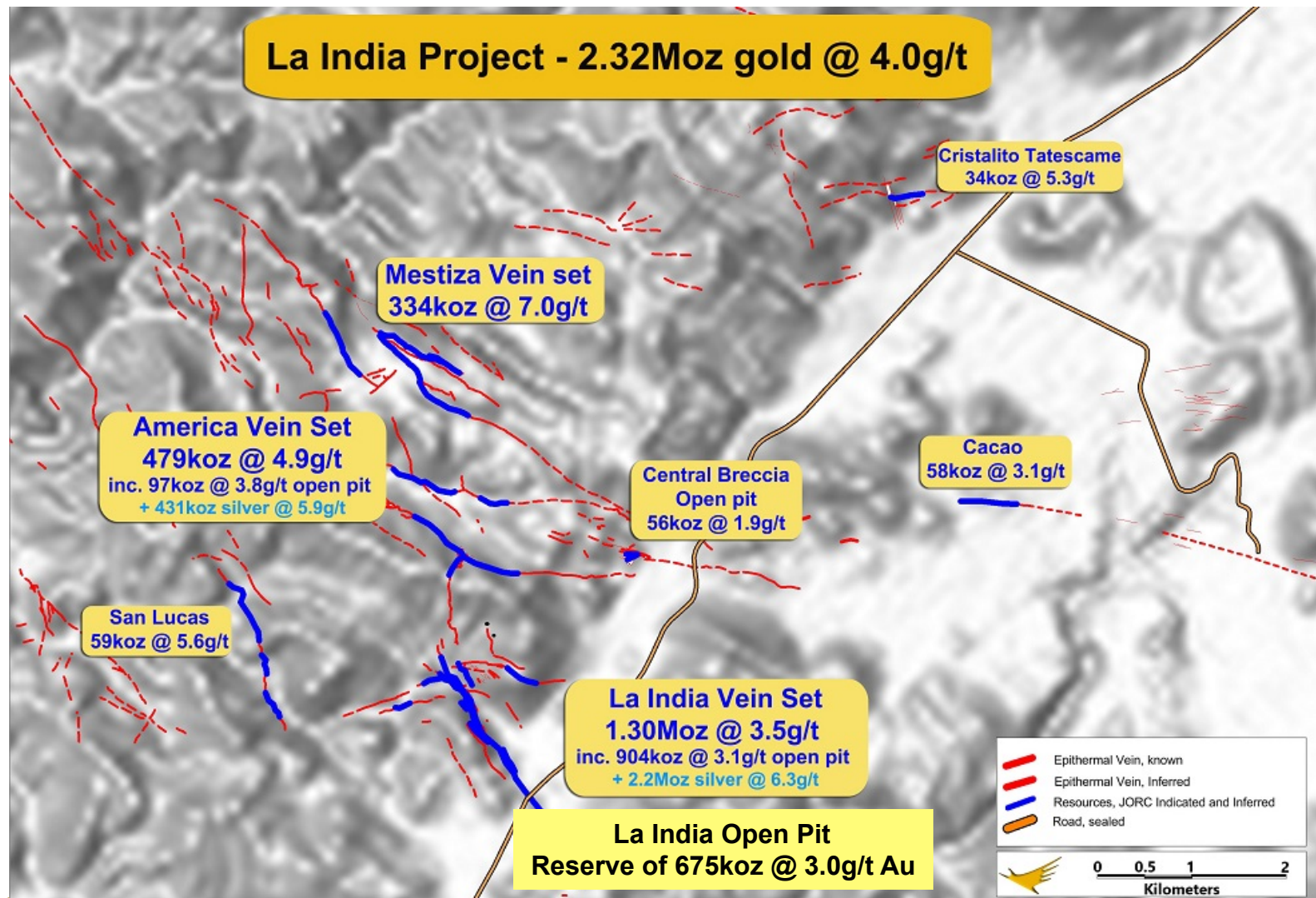
## Reserve Statement Nov 2014

Reserve Classification	Tonnage (Mt dry)	Gold Grade (g/t)	Silver Grade (g/t)	Contained Gold (koz)	Contained Silver (koz)
Probable	6.9	3.0	5.3	675	1,185

1. Based on a cut-off grade of 0.75 g/t Au and gold price of US\$1,250.
2. Average ore loss and dilution are estimated at 5% and 12% respectively.
3. 91% Au and 69% Ag metallurgical recovery was used.
4. The standard adopted for the reporting of the Mineral Reserve uses the terminology, definitions and guidelines given in the Canadian Institute of Mining, Metallurgy and Petroleum (CIM) Standards on Mineral Resources and Mineral Reserves (2014) as required by NI43-101.
5. SRK completed a site inspection of the deposit by Mr Gabor Bacfalusi, BEng MAusIMM(CP), Membership Number 308303, an appropriate “independent qualified person” as this item is defined in National Instrument 43-101.



# La India Project – 2.33Moz gold



# PFS & PEA Key Parameters

Parameter	Unit	PFS	PEA Scenario A	PEA Scenario B
Mill Feed	Mt	6.9	9.5	13.0
Gold Average Head Grade	g/t	3.0	2.8	3.2
Waste Mined	Mt	94.5	118.2	118.2
Strip ratio open pit	Waste:ore	13.6	12.4	12.4
Contained gold	koz	675	850	1,338
Contained silver	koz	1,185	1,376	1,965
Average gold recovery	%	91	91	92
Annual production years 1-8	oz gold	74,000	96,800	137,500
Annual production years 1-8	oz silver	99,200	120,300	153,300
Upfront capital cost	US\$ million	110	127	169
Undiscounted payback (years)	Production year	<4	<4	<4
Operating cash costs	US\$/oz	657	648	651
All-in sustaining costs	US\$/oz	690	685	697



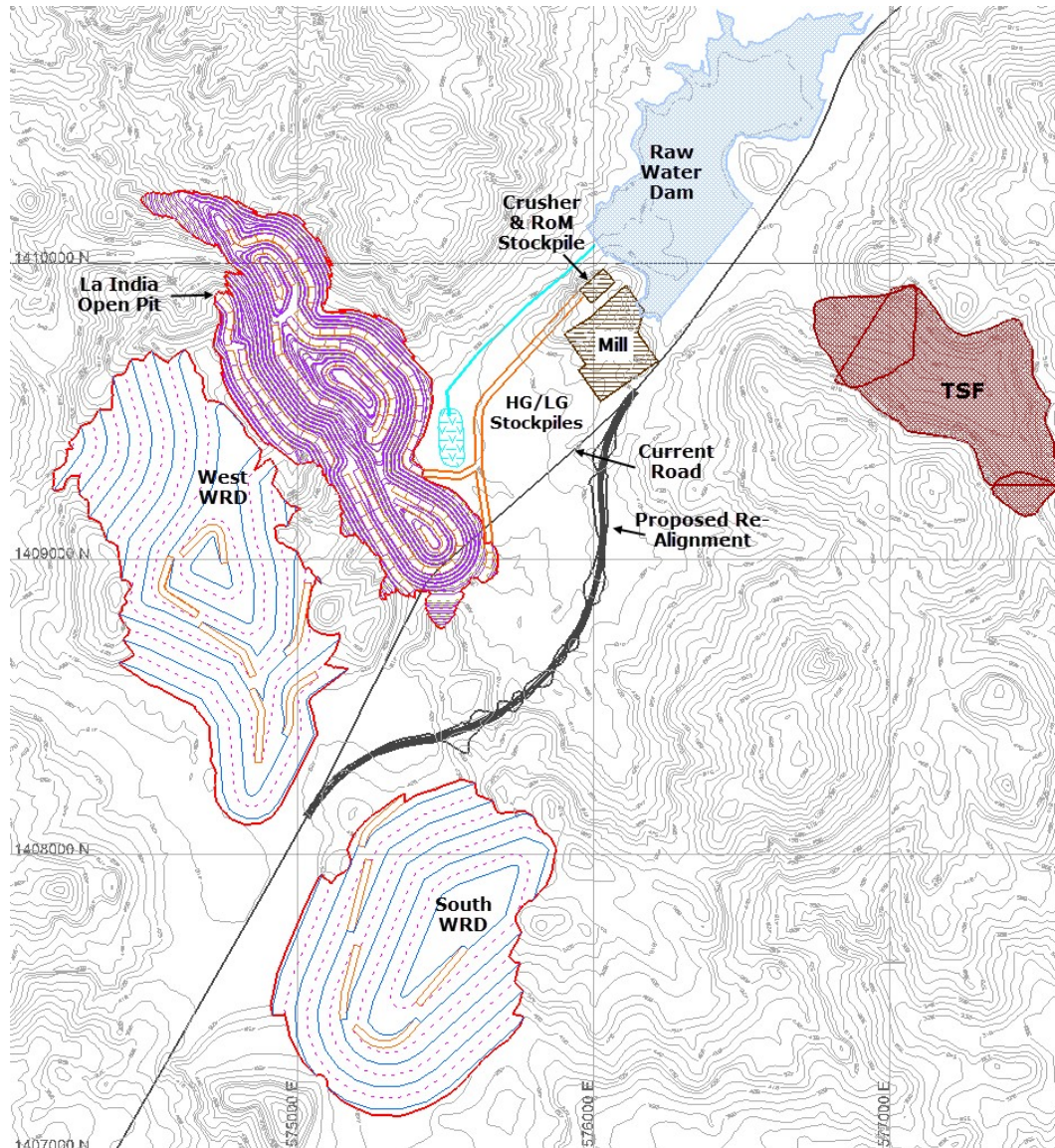
# Operating Costs

Category	Units	PFS	PEA Scenario A	PEA Scenario B
Mining - Open Pit	(US\$/t ore mined)	32.13	30.61	30.79
Mining- Underground	(US\$/t ore mined)	n/a	n/a	61.01
Processing	(US\$/t mill feed)	20.56	18.52	18.58
Refinery	(US\$/t mill feed)	0.35	0.27	0.3
G&A	(US\$/t mill feed)	5.46	3.8	3.88

- 31.1grams = 1 oz gold
- Gold price US\$1,250 per oz
- 1 tonne mineralised ore/rock = US\$40 (1,250/31.1)
- La india open pit reserve = 3g/t
- **1 tonne reserve contains US\$120 of gold per tonne**
- **Operating costs average US\$55 per tonne for open pit**



# Mina la India Site infrastructure



# Capital Costs (Initial and Sustaining)

Capital Costs (US\$ million)	PFS	PEA Scenario A	PEA Scenario B
Processing Plant <sup>1</sup>	48.1	61.3	72.8
Infrastructure	9.8	10.4	10.4
Mining pre-production costs	18.7	16.8	16.8
Mining support operations/equipment <sup>2</sup>	8.1	8.2	30.8
Tailing Storage Facility	6	7.6	11
Land Acquisition	7	8	8
Owners Costs	4.6	4.6	4.6
<b>Upfront Capital Costs</b>	<b>102.2</b>	<b>117</b>	<b>154.5</b>
Contingency <sup>3</sup>	7.6	10.2	14.2
<b>Total Pre-Production Capital Costs</b>	<b>109.9</b>	<b>127.2</b>	<b>168.7</b>

Sustaining and Deferred Capital Costs (US\$ million)	PFS	PEA Scenario A	PEA Scenario B
Processing Plant	0.1	0.1	0.1
Infrastructure	3.6	3.6	3.6
Mining Equipment	2.4	2.8	51.8
Tailings Storage Facility	9.1	13.6	19.1
Land Acquisition	0.2	0.2	0.2
Closure Costs	9	9.8	10
<b>Sustaining and Deferred Capital Costs</b>	<b>24.4</b>	<b>29.9</b>	<b>84.7</b>
Contingency	3.1	4.8	10.3
<b>Total Sustaining and Deferred Capital</b>	<b>27.5</b>	<b>34.8</b>	<b>95</b>

1. Includes EPCM

2. Assuming Contract Mining operations

3. A range of contingencies was used to calculate contingency depending on the confidence of the estimate of each contributing factor.



# Whittle Optimisation.....4 scenarios

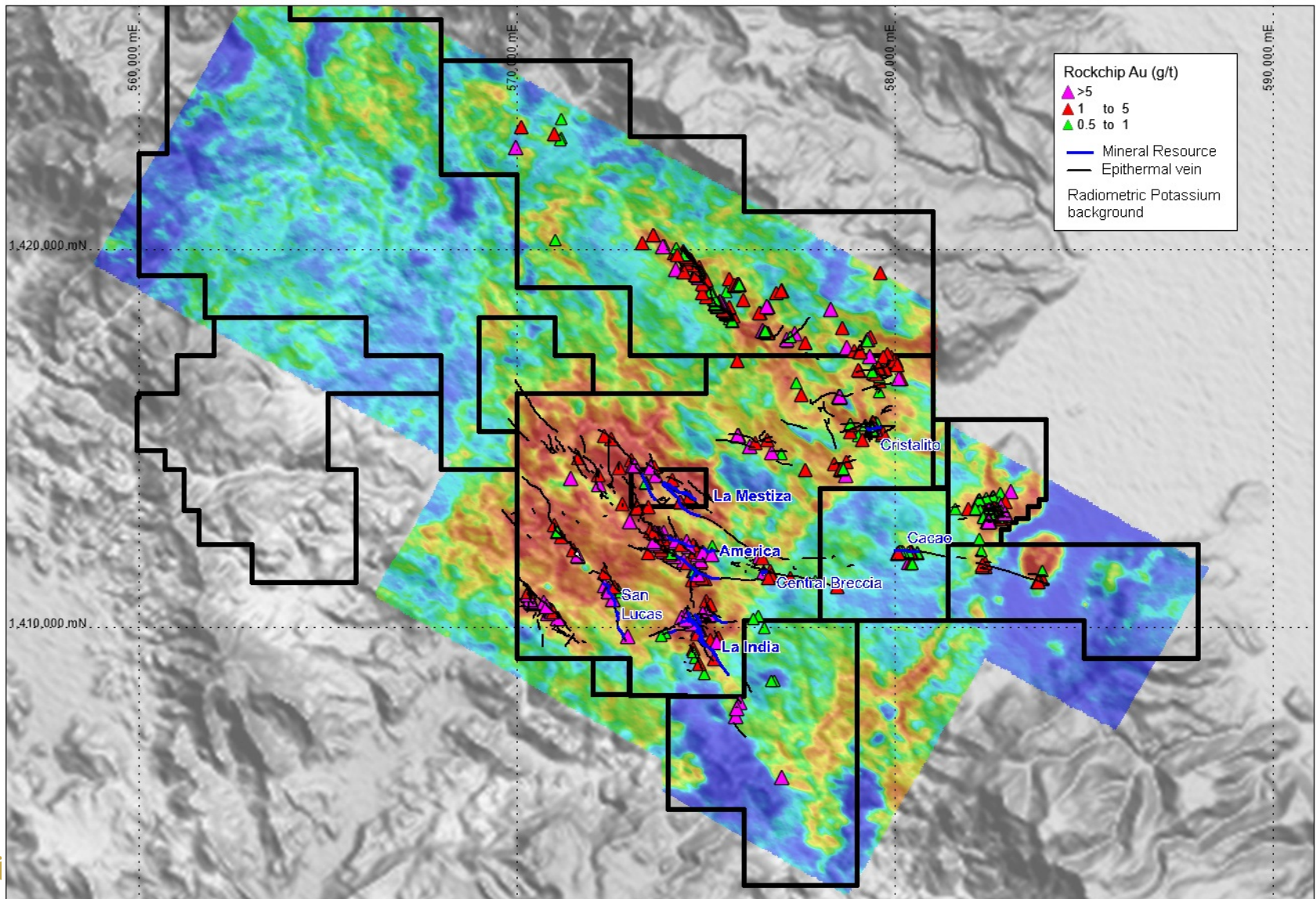
	La India - PFS		La India	All Open Pits		All Open Pits + UG	
	Open Pit - PFS		Open Pit	PEA-A		PEA-B	
	IND Only		IND+INF	IND+INF		IND+INF	
	PFS	Whittle EO	Whittle EO	PEAA	Whittle EO	PEAA	Whittle EO
Nominal Processing Plant capacity tpd	2,200		2,800	3,300		4,400	
Nom. Capacity in M-tpa	0.8		1.0	1.2		1.6	
Contained gold koz	674	866	955	827	1,066	1,313	1,554
Recovered gold koz	614	796	882	752	985	1,203	1,437
1 <sup>st</sup> 5 years avg. production gold p.a. koz	76	91	101	94	118	138	165
Production improvement 1 <sup>st</sup> 5 years		20%	n/a		25%		20%

- +30% increase in gold within a pit shell as pits push deeper
- +20% to 25% increase in annual production
- Capex remains the same in each scenario
- Operating costs remain the same
- AISC under US\$700 oz gold in all scenarios





# Geophysics: Demonstrates a District Play



# What's Next at la India Project?

Demonstrate District Play by:

- follow up on 33 new targets identified in structural geology report
- expand on 70 sq km soil survey
- Regional mapping

De-risk the Project by:

- Apply for Environmental Impact Assessment permit in November 2015
- Secure freehold rural land
- Comply with IFC performance standards for Social and Environmental matters



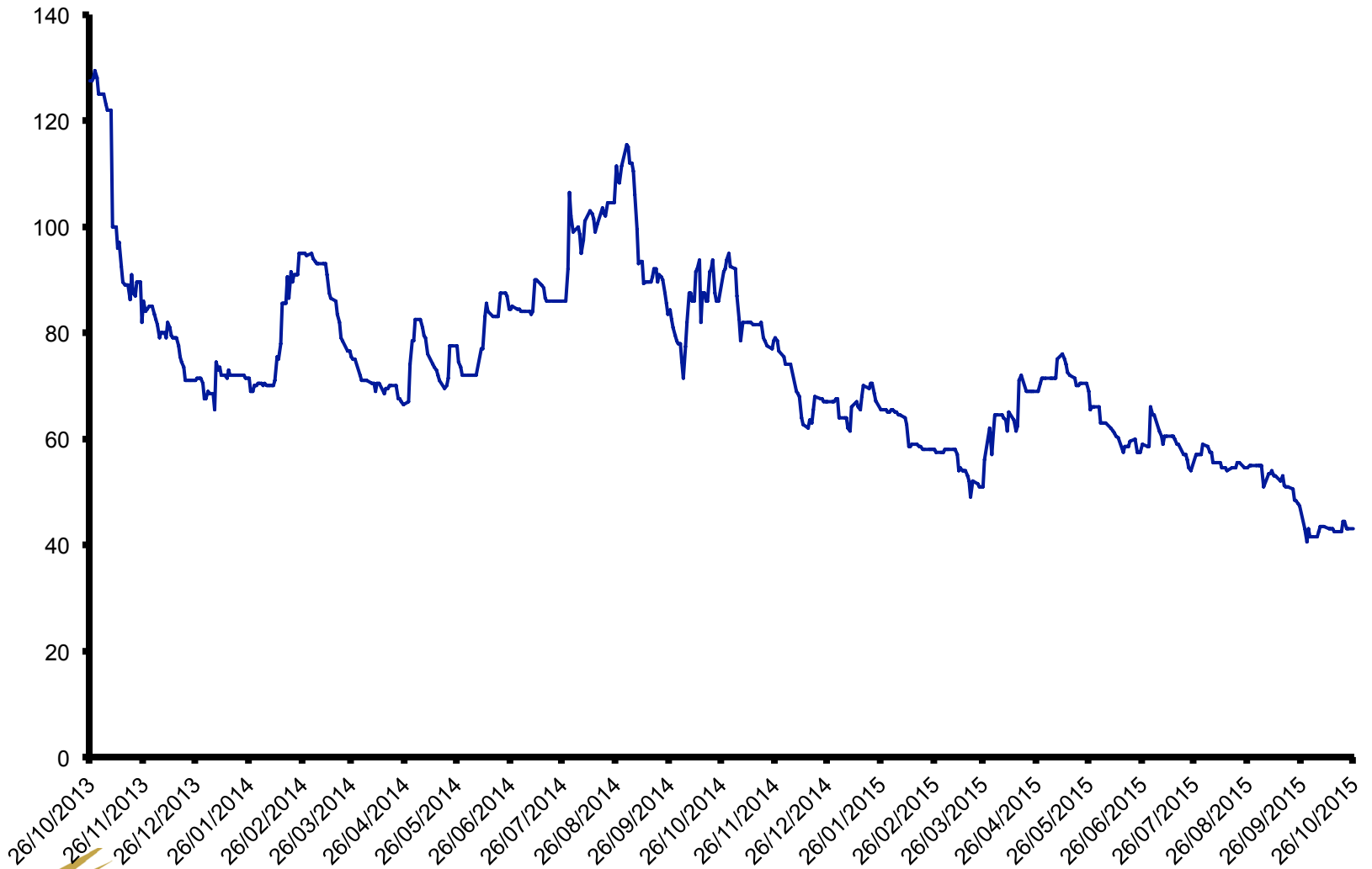
# Share Capital Structure

- Ordinary shares in issue: 45.8M
- Options: 3.1M
- Warrants ex price £1.44 3.6M
- Share Price: £0.43
- Market Capitalisation: £20M or US\$30M
- Cash Position at 30<sup>th</sup> June 2015 £2.4M or US\$3.7M
- The Company's significant shareholders are set out in the table below:

<b>Shareholder</b>	<b>No. of shares</b>	<b>Percentage of issued share capital</b>
Regent Pacific Group	3,977,274	8.7%
Mark Child	3,917,500	8.6%
International Finance Corp	3,900,000	8.5%
Oracle Investment Management	3,329,645	7.3%
Sentry Precious Metals Growth Fund	1,281,056	2.8%

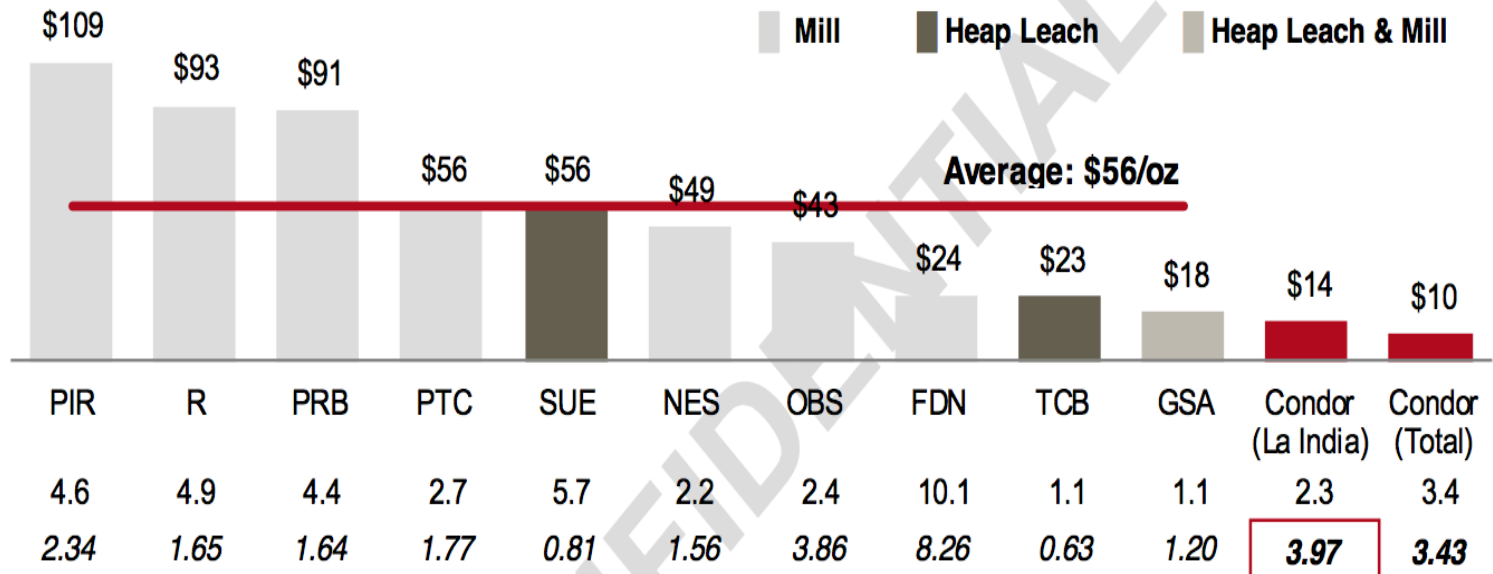


# Chart of share price: 2 years



# Market Analysis

## Recent Developer M&A – EV / Total AuEq Resource (US\$/oz AuEq)



Transactions (Target / Acquirer): **R** - Romarco / OceanaGold; **GSA** - Goldcorp (South Arturo Mine) / Premier Gold; **NES** - Newstrike Capital / Timmins Gold Corp.; **PTC** - Premier Gold (Trans-Canada) / Centerra Gold Inc.; **PRB** - Probe Mines Ltd. / Goldcorp Inc.; **TCB** - Goldgroup Mining (Caballo Blanco) / Timmins Gold Corp.; **FDN** - Kinross Gold (Fruta del Norte) / Lundin Gold Inc; **OBS** - Orbis Gold Ltd. / SEMAFO Inc.; **PIR** - Papillon Resources Ltd. / B2Gold Corp.

Source: Cormark Securities



# Summary

- High grade NI 43-101 resource of 2.3M oz gold @ 4.0g/t
- High grade NI 43-101 open pit reserve of 675,000 oz gold @ 3.0g/t
- All-in sustaining cash costs under US\$700 oz gold
- PFS shows 80,000 oz gold per annum open pit – base case
- PEA shows 100,000 oz gold per annum open pit –add feeder pits
- PEA show 137,500 oz gold per annum all open pits + some underground
- Optimisation study increased contained gold within a pit shell by 30% and annual production y 20% to 25% for 1<sup>st</sup> 5 years
- Artisan miners add 10,000 oz gold per annum to each scenario
- Low upfront capital costs
- Additional significant upside through numerous identified targets on a license where the existing resource is confined to 10% of the license area