



# CONDOR GOLD

**European Gold Forum  
4<sup>th</sup> to 6<sup>th</sup> April 2017**



# Disclaimer

This written presentation (the "**Slides**") has been prepared by Condor Gold plc (the "**Company**") and is the sole responsibility of the Company. No representation or warranty, express or implied, is given by or on behalf of the Company or its shareholders, directors, officers, or employees or any other person as to the accuracy or completeness of the information or opinions contained in the Slides and no liability is accepted for any such information or opinions (including in the case of negligence, but excluding any liability for fraud).

The Slides do not constitute an offer, invitation or recommendation to subscribe for or purchase any securities in the Company. Neither the Slides, nor the fact of their distribution, shall form the basis of, and the Slides should not be relied on in connection with, any contract or future decision to acquire the Company's securities.

The Slides may contain forward-looking statements, including, without limitation, statements containing the words "believes", "expects", "estimates", "intends", "targets", "may", "plan", "will" and similar expressions, including the negative of those expressions. All statements contained in the Slides (including forward-looking statements) are made as at the date of this presentation and the Company accepts no obligation to disseminate any updates or revisions to them.

Forward-looking statements are based on current expectations and involve known and unknown risks, uncertainties and other factors beyond the control of the Company that could cause the actual performance or achievements of the Company to be materially different from any future results, performance or achievements expressed or implied by such forward-looking statements. Such risks, uncertainties and other factors include, among others, changes in the credit markets, changes in interest rates, legislative and regulatory changes, changes in taxation regimes, changes in gold prices, political risks, operational risks and general economic and business conditions. Accordingly, readers should not place undue reliance on forward-looking statements.

[The Slides contains maps, charts, schematics, cross-sections and other graphics and images (the "**Images**") which have been produced by the Company using common software packages such as MapInfo and Micromine. The source data for the Images includes the Company's own data, data from third party consultants and from publicly available information.]



# Strategy Statement

## Twin strategy

- Permit and construct a base case of 2,800tpd processing plant, producing 100,000 oz gold per annum at Mina La India, Nicaragua.
- Continue successful exploration strategy to expand mineral resources by 1m to 2m oz gold and prove a major Gold District



# Why Invest in Condor Gold?

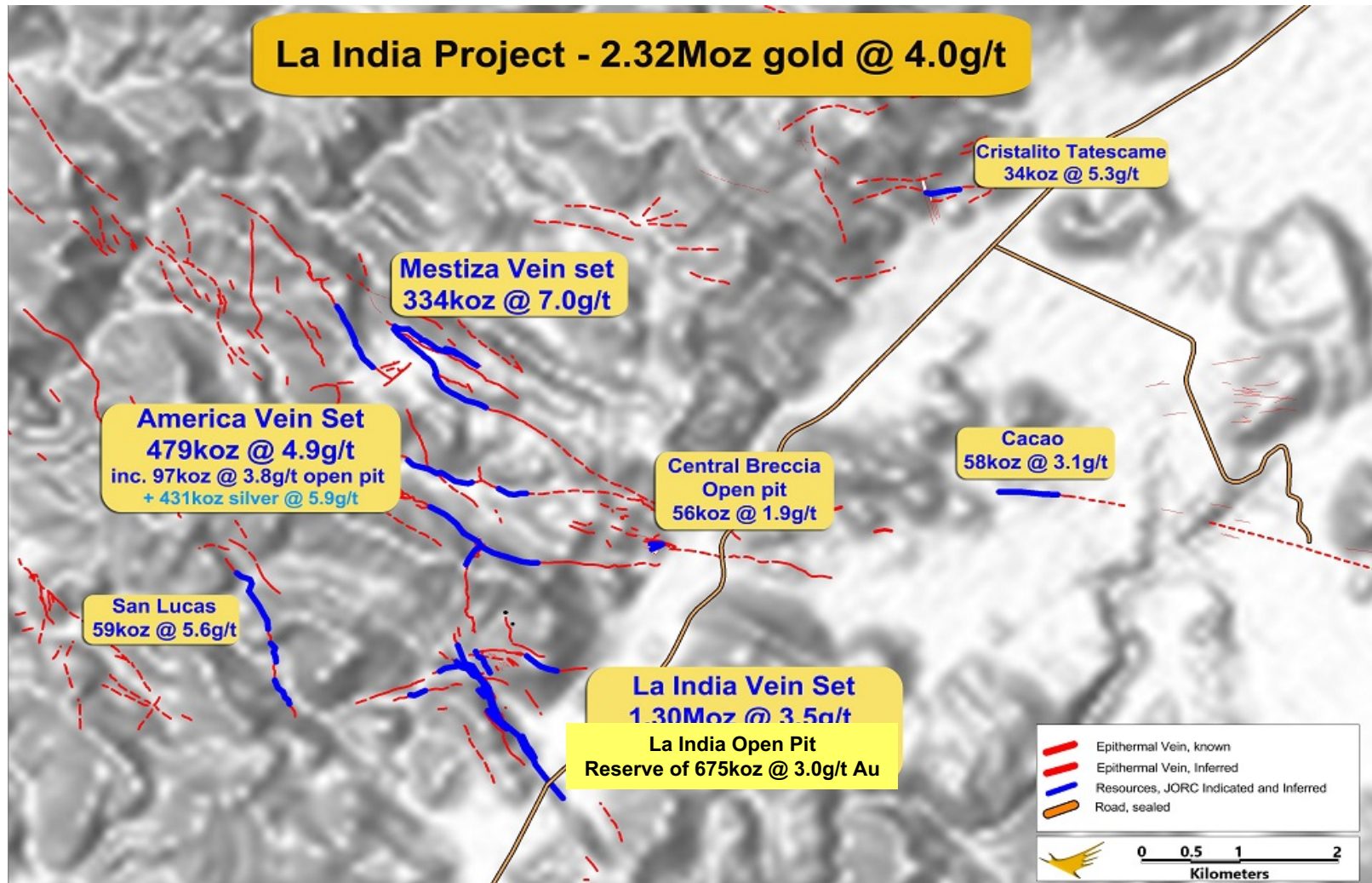
- High grade 18 Mt @ 4.0 g/t for 2.31 Moz gold
- US\$20 per resource oz gold in the ground
- 0.26 times price to book ratio
- RBC Capital Markets: US\$131 per resource oz gold and price to book ratio 0.84 times
- Mineral reserves: US\$700 all-in-sustaining cash costs
- Base case 100,000 oz gold p.a. open pit close to permitting
- 165,000 oz gold p.a. adding feeder pits and underground
- District scale potential of up to 5M-10M oz gold
- Serious backers: World Bank/IFC, Jim Mellon and Ross Beaty
- Undervalued compared to peer group on TSX
- North American secondary listing planned



# Nicaragua Concessions 408 sq km land holdings



# La India Project – 2.33Moz gold



# NI 43-101 CIM Standard Resource/Reserve- Dec 2014

## Mineral Resource

La India Project 9.6 Mt @ 3.5 g/t 1,083,000 oz gold Indicated

8.5 Mt @ 4.5 g/t 1,233,000 oz gold Inferred

---

Including Open pit: 8.3 Mt @ 3.1 g/t 832,000 oz gold Indicated

0.9 Mt @ 2.5 g/t 71,000 oz gold Inferred

---

## Mineral Reserve

La India open pit 6.9 Mt @ 3.0g/t 675,000 oz gold



# La India Open Pit: Permits at Advanced Stage

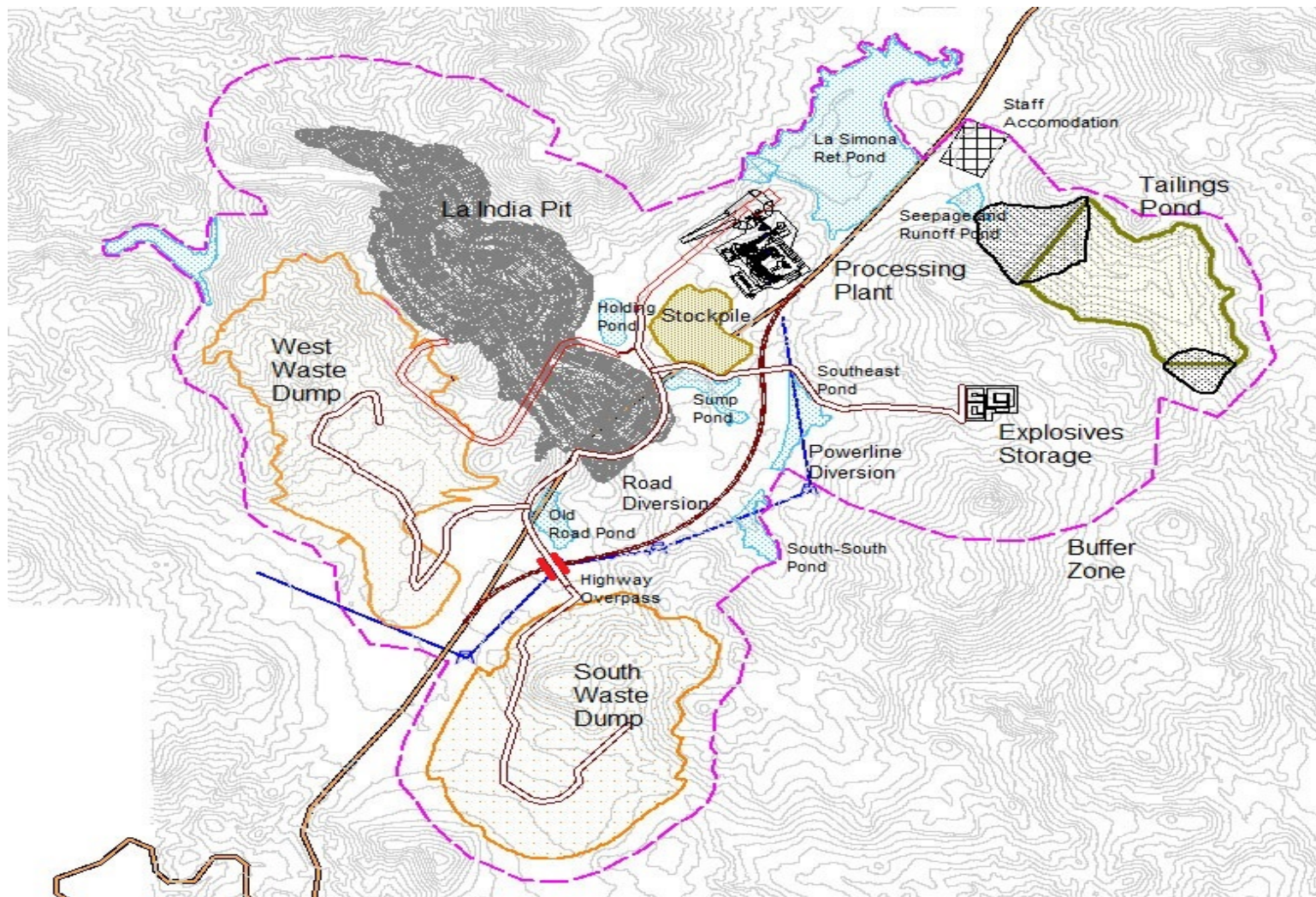
<b>Ministry of Environment</b>	<b>Passed Technical Reviews of EIA</b>
Processing plant capacity	2,800 tonnes per day
Processing plant capacity	1M tonnes per annum
Contained gold in pit shells	955,000 oz (866,000 Indicated + 89,000 Inferred)
Recovered gold	822,000 oz
Annual production 1 <sup>st</sup> 5 years	101,000 oz
Up front capital cost	US\$120M

- Whittle Enterprise optimisation study to NPV
- NPV averages US\$195M and 31% IRRs across 4 production scenarios
- Artisanal miner ore of 10,000 oz per annum can be added
- **Re-permitting a former mine. 576,000 oz gold at 13g/t produced over LOM, closed in 1956**





# Mine Site Arrangement & Infrastructure



# Whittle Enterprise Optimisation.....4 scenarios

	La India - PFS		La India	All Open Pits		All Open Pits + UG	
	Open Pit - PFS		Open Pit	PEA-A		PEA-B	
	IND Only		IND+INF	IND+INF		IND+INF	
	PFS	Whittle EO	Whittle EO	PEA A	Whittle EO	PEA A	Whittle EO
Nominal Processing Plant capacity tpd	2,200		2,800	3,300		4,400	
Nom. Capacity in M-tpa	0.8		1.0	1.2		1.6	
Contained gold koz	674	866	955	827	1,066	1,313	1,554
Recovered gold koz	614	796	882	752	985	1,203	1,437
1 <sup>st</sup> 5 years avg. production gold p.a. koz	76	91	101	94	118	138	165
Production improvement 1 <sup>st</sup> 5 years		20%	n/a		25%		20%

- +30% increase in gold within a pit shell as pits push deeper
- +20% to 25% increase in annual production
- Capex remains the same in each scenario
- **NPV averages US\$195M and 31% IRRs**
- AISC under US\$700 oz gold in all scenarios
- Artisanal miner ore of 10,000 oz per annum can be added to each scenario



# Social Licence to Operate

- Objective to prepare community for Public Consultation 2,800tpd plant
- Corporate Social Responsibility Strategy and Stakeholder Engagement Plan
- Information office opened Nov 2015
- Local newsletter
  
- Education: In alliance with Ministry Education supporting 919 students with school supplies in 15 villages
- Technical Training: In alliance Ministry of Labour training planned for 310 people. 9 separate courses. 100 people taken course so far. Supporting a computer lab., English courses, Construction Foreman, Automotive Mechanic and welding.
- Health: over 1,500 medical consultations, 600 lab tests, supporting rural health program, fumigations against Dengue
- Catholic Church: several meetings and CSR strategy explained and helped repair or improve infrastructure of 15 churches of different denominations
- Water Project
- Sports: supporting football, baseball, basketball and volleyball
- Police meetings explain CSR Strategy and permitting
- Mayor Meetings explain CSR Strategy and permitting



# Benefits to Nicaragua and the local Community

## To Nicaragua

- US\$120m foreign direct investment from a British Company
- Show case state of the art mine in Central America with best possible environmental practices
- 3% royalty on sales
- 30% corporation tax

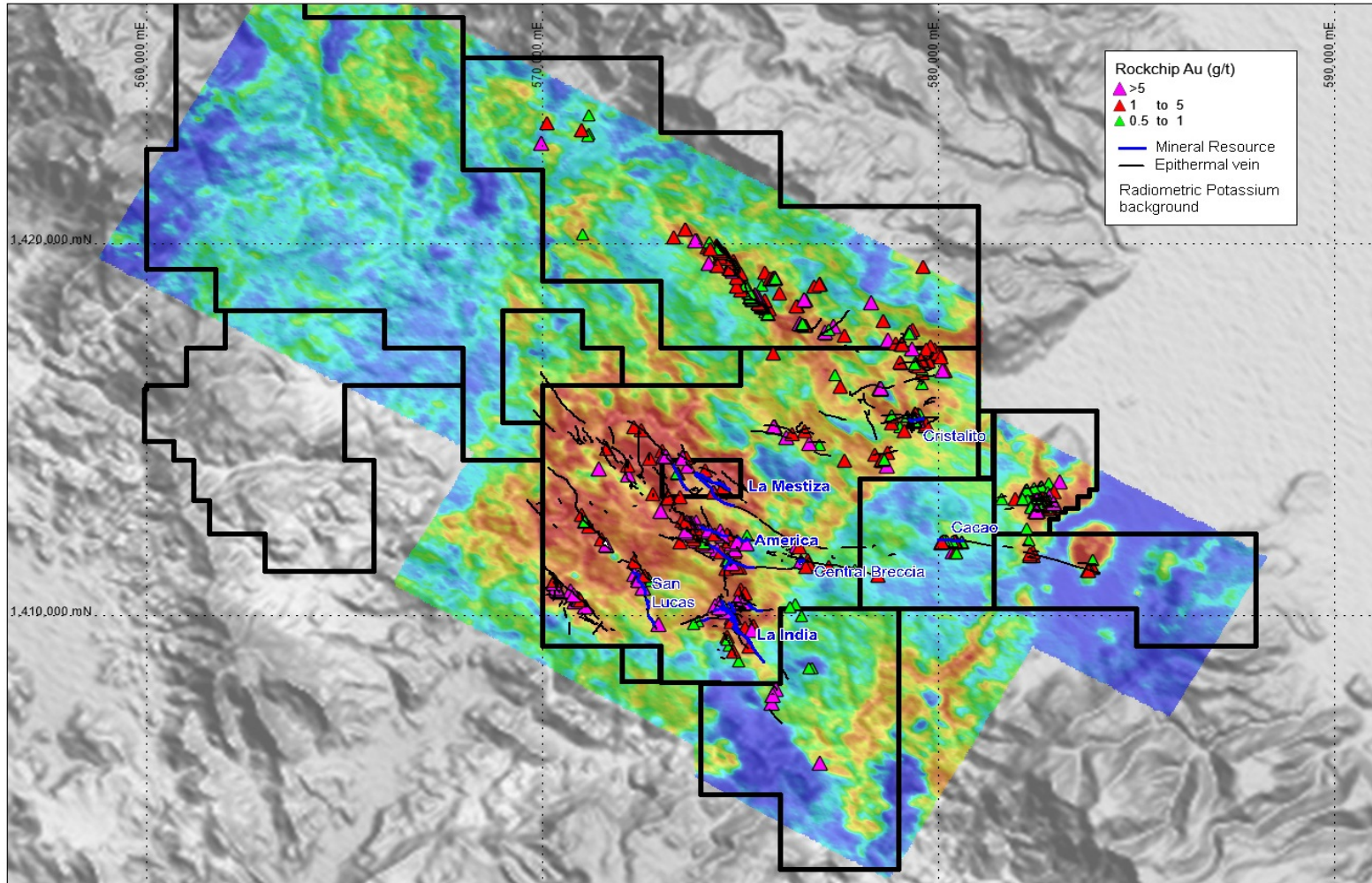
## To the Community

- 500 jobs during the construction period
- 300 jobs during the operations
- Training courses to improve skills and salaries
- For every 1 job in a mine 5 jobs supplying the mine
- Better standards of living
- New healthcare center and school
- Water 24/7 not 1 hour in 48 hours

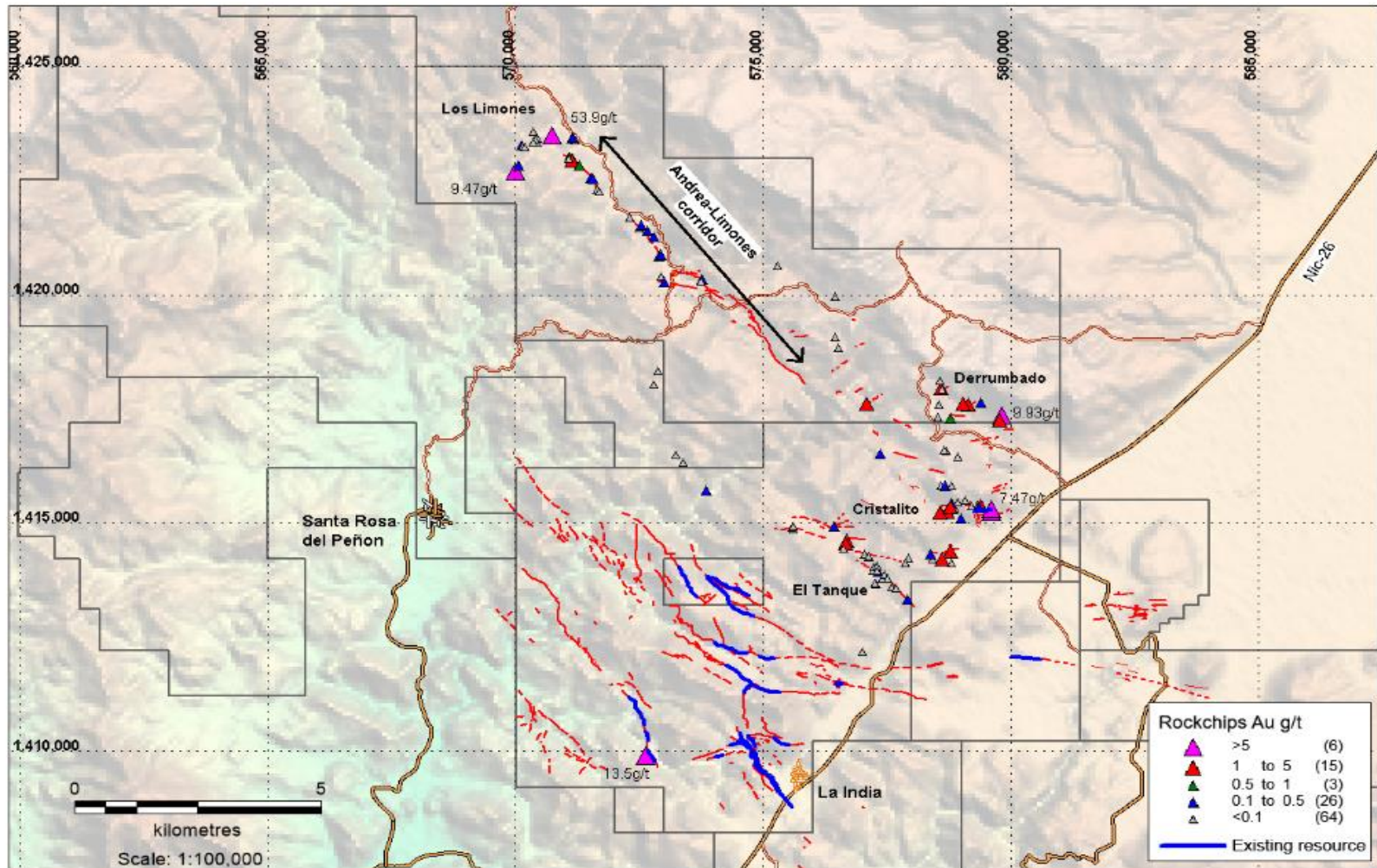




# Geophysics: Demonstrates a District Play

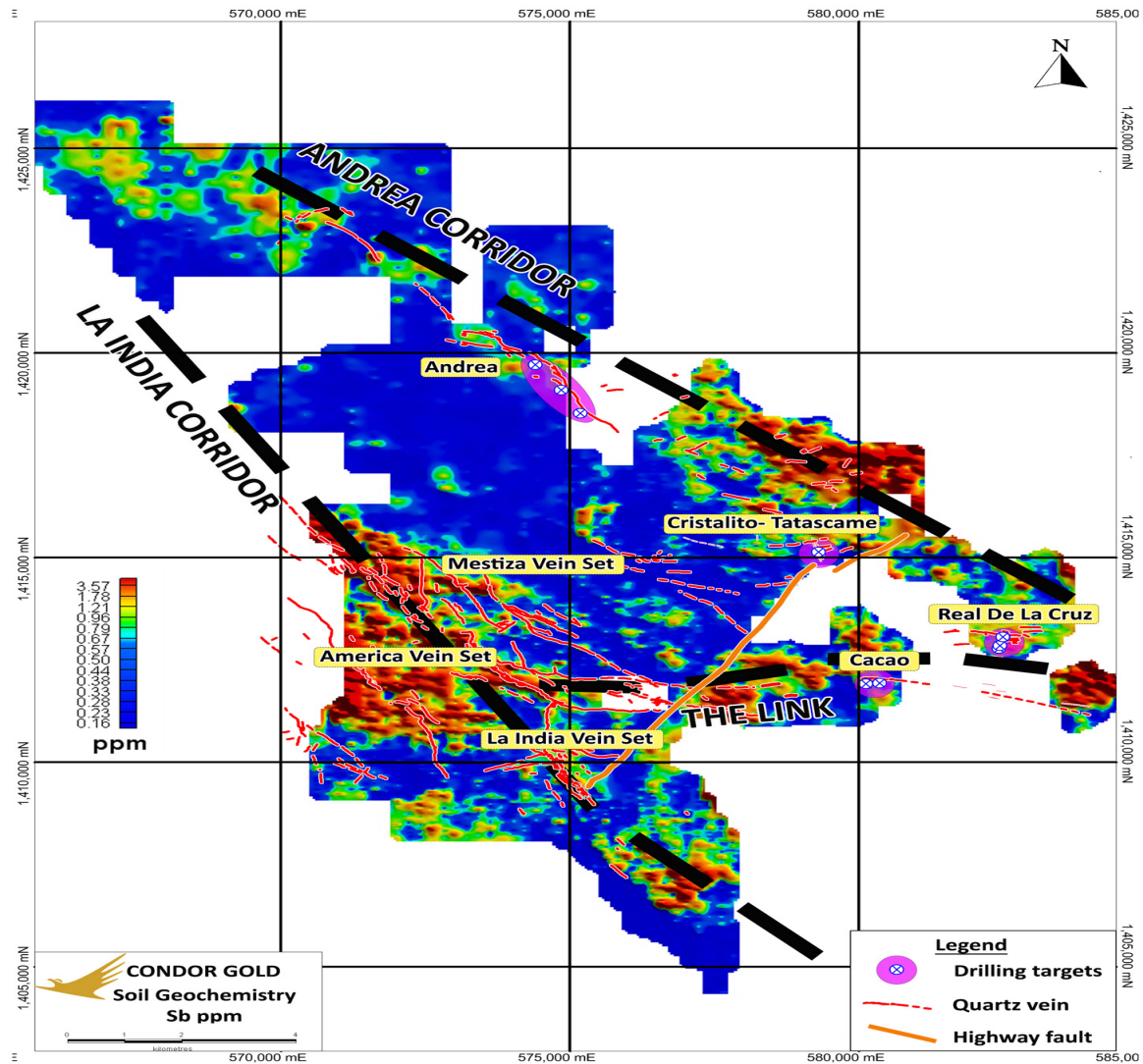


# 142g/t gold rock chip: 12 km long mineralised corridor





# 5,000m Scout Drilling In Progress



## 6,000m Resource Expansion Drilling Underway

<b>Vein Set</b>	<b>Current Resoruce</b>	<b>Target</b>	<b>Increase</b>
La India	1300k oz	1600k oz	
America	479k oz	630k oz	
Mestiza	333k oz	780k oz	
<b>TOTAL</b>	<b>2112k oz</b>	<b>3010k oz</b>	<b>43%</b>
Cacao	58k oz	?	
Central Breccia	56k oz	?	
San Lucas	59k oz	?	
Tatascame	34k oz	?	
Blue sky		?	

20,000m drill program to increase resource on 3 main vein sets by 40%





## Mestiza Vein Set Resource conversion

- 2,000m of 6,000m resource conversion drilling underway March 2017.
- Shallow drilling programme, average depth of 52 drill holes is 112m
- 2.4 Mt @ 10.2 g/t for 786,000 oz gold of Soviet style resource in 1991
- 1.5 Mt @ 7.5 g/t for 333,000 oz gold Inferred to NI 43-101 in 2014
- Mestiza Resource excluded from current PFS and PEA
- High grade, at surface
- Open down dip and along strike
- Strong potential to add to future mine plan



# Share Capital Structure

- Ordinary shares in issue: 61.37M
- Options: 3.1M
- Warrants ex price £1.44 expiry 10/2018 3.6M
- Warrants ex price £0.93 expiry 3/2019 4.2M
- Warrants ex price £0.60 4/2018 4.3M
- Share Price: £0.67
- Market Capitalisation: £41M or US50M
- Net cash 28<sup>th</sup> Feb 17 US\$6M

Shareholder	No. of shares	Percentage of issued share capital
Ross Beaty	5,362,903	8.74%
IFC	4,500,000	7.33%
Oracle Investment Management	4,054,645	6.61%
Mark Child	3,954,645	6.46%
Hargreave Hale Limited	3,111,290	5.10%
Jim Mellon	3,019,330	4.92%



# Comparison valuation of Gold Exploration Companies

<b>Company</b>	<b>Market Cap US\$M</b>	<b>Price/NAV</b>	<b>EV/ resource oz gold US\$</b>
Dalradian	264	0.57	114
Continental Gold	501	1.17	112
Pilot Gold	60	0.73	46
Gold Road Resources	387	0.74	68
Integra Gold	306	0.78	316
Lundin Gold	415	0.91	56
S2 Resources	45	0.65	471
NovaGold Resources	1901	0.87	68
Midas Gold	121	0.74	35
Sabina Gold & Silver	217	1.26	38
<b>Global total</b>	<b>4,313</b>	<b>0.84</b>	<b>131</b>
<b>Condor Gold</b>	<b>50</b>	<b>0.26</b>	<b>20</b>

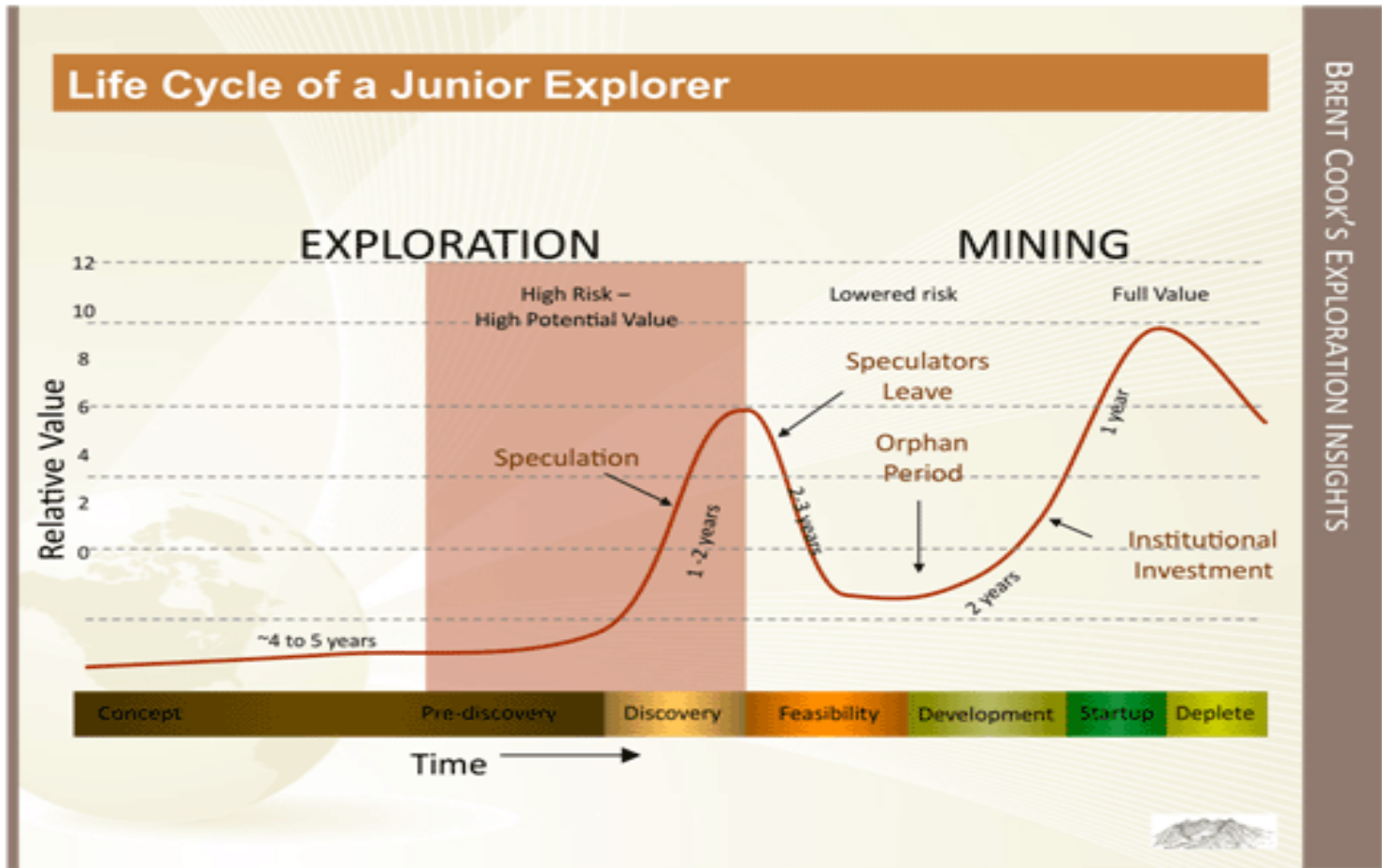
Average all-in sustaining costs US\$1,012 oz vs US\$700 oz for Condor



# Chart of Share Price: 5 Years



# Life Cycle of a Junior Explorer



# What's Next at la India Project?

## **Once permits granted,**

- 12 months of additional technical studies to BFS
- 24 month construction period

## **Expand Gold Resources**

- 10,000m drilling in 2017 underway
- Drill programs planned to add 800k oz gold to 3 main vein sets

## **Demonstrate District Play by:**

- 5,000m scout drilling in 2017 underway
- follow up on 33 new targets identified in structural geology report
- soil survey to another 313 sq km. 98% completed
- Regional mapping

